

CONTENTS

- 2 Habitat Management
- 3 Butterfly & Bee Garden
- 4 Nature Corner
- 5 Events
- 6 More Events
- 8 Interns
- 10 Thank You
Volunteer Spotlight
- 11 Memberships
- 12 Member Appreciation
heiknbrew

FROM THE DIRECTOR

The summertime's splendor continues to provide great nature opportunities for us all. We had an amazing summer season of programs for kids and adults, and our habitat crew enhanced our preserve with their dedication to removing non-native invasive plants along with planting another round of beautiful trees and shrubs.

Please also read Max's article about the deer EX-closure and the anticipated results from its presence on our preserve.

I am thrilled to share that our Forget-Me-Not Creek Restoration Project is 95% complete. You can now drive by on Woodland Drive and see the beautiful new channel with more complex structures in which all the creek's creatures may thrive while also supporting ephemeral wetlands when higher rainfall events occur. The tasks we still have left to do include seeding and planting more vegetation around the new channel. Lastly, we will create informational signage for you to take in when you visit the viewing platform and update our website regarding the project. Keep your eyes out for guided hikes where you will get to see firsthand the beauty of a well-meandered stream.

Change is constant and we are not immune to it. I mentioned the change in our membership giving levels a while ago and that time is upon us. You will see, effective October 1, 2025, the

new membership levels for our 2026 membership year. Please note that every level is considered a family or a household membership. Your ongoing support and investment make a big difference in our ability to enhance habitat and provide interesting and engaging programs. We are very grateful for all of members! We also experienced

a change in staff members as Nancy Nabak resigned after nine and a half years helping to make the Dunes a great place to visit. Yet another change happened due to generous community support and that is we grew our land base by 45 acres. This acreage is adjacent to our Bugler Preserve. It consists of managed prairie and

northern hardwood forest (think maples, beech, basswood). The prairie and forest provide even more quality habitat for the rusty patched bumble bee. This bee is listed as federally endangered due to habitat loss however keeping this acreage managed with species that support it will help maintain its population.

We continue to look at new ways for people to connect with the environment. We are happy to offer programs that include art, literature, music and, lest we forget, science too! Please peruse the fall offerings and join us for hike, a write-in (read more about it), a meditation or a bioblitz!

~ Sue Crowley, executive director



Twelve-spotted Skimmer



Photo by Laurie Shavlik

Habitat Management



Photo by Cielo Gutierrez-Kuhaupt

This summer, our Habitat Restoration Interns were busy planting an additional 1100 larger containerized trees and shrubs to add native diversity to the area along Columbus street formerly dominated by large Ash. Some tree species we planted this year include Bur and Swamp White Oak, Yellow Birch, Basswood, Hackberry and an assortment of native shrub species. There were many hot, humid days of work but they did an excellent job making sure our stock was planted correctly and protected from deer browse. Our interns also made a lot of progress retreating invasives amongst our planting, mostly common buckthorn that's been creeping in from

along the urban corridor. The continued progress on treating invasives will provide some additional space for everything to breathe and establish themselves without aggressive competition.

The other big project we've made strides on is our 9-acre deer enclosure at our Bugler Preserve. The area we are protecting from deer browse is a mature upland forest filled with many large Sugar Maple, Red Oak, Beech, Hemlock and White Pine. The soil was less rooty than was anticipated so our 4x4s were easier to auger into the soil. This made most of the heavy lifting go by quickly and smoothly. Our posts were placed approximately every 50 feet, creating the 9-acre rectangular area. After we attached three rows of 12 gauge wire to our 4x4s, onto which we attached our 8' deer fencing. The final touch was adding some blue flagging. Deer perceive shades of blue better

than other colors, so the flagging is to help our deer see our structure better.

It's going to be exciting to watch what happens when deer are no longer able to munch on everything in the understory. What will start to pop up or have a chance to grow big and tall?

The next steps of our project will be to address the invasive species present and enhance our understory for the local populations of rare bees, including the endangered rusty patched bumblebee (*Bombus affinis*) and another newly documented population of the state special concern species, Sanderson Bumble bee (*Bombus sandersoni*). These habitat projects are funded through two grants from the U.S. Forest Service.

Other rare species like the Forked Aster (*Eurybia furcata*) also got some attention this summer. Thankfully the location where this plant occurs in our preserve is of high quality, with noticeable regeneration of native trees like Yellow Birch and White Cedar, high diversity in the herbaceous layer, and low density of invasives. We were able to come through with loppers and small daubers of herbicide and treat stumps of the invasives present on site, hand pulling seedlings when possible. Working in areas with high density of invasive species can be overwhelming sometimes, so knocking back invasives creeping into a high quality area was a nice change of pace. It's rewarding when a small amount of labor can make a big impact in preserving our natural spaces. I'm thankful for grantors like the Natural Resource Foundation of Wisconsin's C.D. Besadny Conservation Fund for making this small but impactful project possible.

— Max Kornetzke, land manager



Photo by Max Kornetzke

The Butterfly & Bee Garden

Sheet Mulching

Ever thought of converting a small section of your yard (or the entire yard) to native wildflowers and bunchgrasses? One of the biggest problems you will encounter is weed management. For large-scale restorations the use of herbicides is often a necessary first step, but not everyone who is looking to add a little bit of habitat back into their landscape wishes to go that route. While I think herbicides are a useful tool when used correctly, there can be other ways in small landscape settings that can be effective at suppressing undesirable yard weeds.

One pretty effective method to suppress yard weeds is through sheet mulching. Sheet mulching won't work well if you're trying to restore a few acres to prairie habitat, but it can be effective around your home garden and enrich your soil over time. We are using this method in our garden under the oak tree. We will plant more shade tolerant forest species that will enhance the diversity of the garden.

The first step is to collect cardboard. Cardboard should be non-glossy and free of any plastic or other things that won't biodegrade in a human lifespan. You'll place your cardboard over any mowed weeds or grass you are trying to suppress and overlap them so they can't easily crawl through the gaps. Next is selecting the mulch. I recommend a mulch that is shredded twice so there is a mix of material that will break

down quickly into soil and some that will take longer so your soil is protected from being dried out. Next is to haul your mulch over and layer one to two inches over the top. Any less than that and by the end of the season you'll have undesired things bursting through the area.

I usually water the mulch so everything underneath is saturated and ready to break down naturally. Worms and other invertebrates will thrive in this environment, making everything break down nicely and smoothly. Sometimes though, if left to dry too much, the mulch can become hydrophobic, or resistant to water. If the mulch becomes hydrophobic it will take much longer for it to break down and this can cause problems. A good week of rain or saturating the area with a garden hose or sprinkler a few days in a row can help reverse this.

When you start to see bird's nest fungi forming across your mulch, you know things are going well! In fact, digging around and peeling back some of your cardboard later in the season you may start to see white mycelium networks colonizing the organic

material. This is great news for your future soil health. The fungi and invertebrates work together to break down the mulch, creating a nice medium for planting your native wildflowers and bunchgrasses.

Photo © rintzezelle, some rights reserved (CC-BY) (from iNaturalist)



Birds nest fungi

You can sheet mulch pretty much any time of the year, but I find it most beneficial in the fall or spring so the area has a bit of time to break down. Over time, as new soil is created, the desired species you planted will fill in and colonize. Of course, other things may creep in, but this process offers a relatively blank canvas for home gardeners to convert their lawn without using herbicides.

— Max Kornetzke, butterfly garden coordinator

Nature Center

P.O. Box 486
3000 Hawthorne Avenue
Two Rivers, WI 54241

Hours

Monday - Friday: 9 am - 4 pm
Saturday: 9 am - 12 pm
(April - October)

Contact

Phone: (920) 793-4007

Website: woodlanddunes.org

Facebook: Look up Woodland Dunes in Two Rivers, WI and like our page!

Staff

Executive Director
Sue Crowley
*Assistant Director/
Education Coordinator*
Jess Johnsrud

Land Manager
Max Kornetzke

Naturalist
Kennedy Zittel

Administrative Assistant
Jenifer Thompson

Cleaning Specialist
Kyle Kraus

Board of Directors

President Tom Kocourek
Vice President Bruce Robinson
Treasurer Troy Christiansen
Secretary Mark McLaughlin

Board Members

Rebecca Ablor
Robert Gahl
Andrea Holschbach
Susan Knorr
Lee Kummer
Nick Lohr
Dolly McNulty
Titus Seilheimer
Charles Sontag
Kelly Vorrion

Emeritus Directors

Founders, previous board members, and previous executive directors are eligible for this honor.

2025 Inductees

Helen Bleser
Lyn Brouchoud
Dr. Donald DeBruyn
James Knickelbine
Ellen Lewellen
Robert Weinert
John Woodcock
Lucy Zeldenrust

Legacy Leaders

Designated to people who have passed away and have significantly contributed and shaped Woodland Dunes.

2025 Inductees

Bernie Brouchoud
Gordon Buboltz
Helen Dickie Krivacek
Winnie Smith
Beverly Vareka

NATURE CORNER



Black-billed Cuckoo

Photo by Joel Trick

Summer Bird Surveys

This year, Woodland Dunes continued the tradition of conducting summer bird surveys. From early June through mid-July, staff and volunteers visit set points across the preserve to conduct 10-minute surveys and document what species we hear and see. This year we documented 75 species during those counts and had an additional 11 species as incidental sightings during the summer survey timeframe. This means that at least 86 species of birds were documented being on our preserve during the summer nesting season! This total is slightly less than last year, with us having documented 90 species. One of my summer bird survey highlights was hearing a black-billed cuckoo call out from along Willow Trail as Jess and I set up for a summer program. This was my first time getting to hear that bird's call so it was extra special!

By Kennedy Zittel, naturalist

Alder Flycatcher	Brown-headed Cowbird	Great Egret	Red-shouldered Hawk
American Crow	Canada Goose	Hairy Woodpecker	Red-tailed Hawk
American Goldfinch	Canada Warbler	Horned Lark	Red-winged Blackbird
American Herring Gull	Cedar Waxwing	House Finch	Ring-billed Gull
American Kestrel	Chimney Swift	House Sparrow	Rock Pigeon
American Redstart	Chipping Sparrow	Indigo Bunting	Rose-breasted Grosbeak
American Robin	Clay-colored Sparrow	Killdeer	Ruby-throated Hummingbird
American White Pelican	Common Grackle	Mallard	Sandhill Crane
Bald Eagle	Common Yellowthroat	Marsh Wren	Savannah Sparrow
Baltimore Oriole	Cooper's Hawk	Mourning Dove	Sedge Wren
Barn Swallow	Downy Woodpecker	Mourning Warbler	Song Sparrow
Belted Kingfisher	Eastern Bluebird	Northern Cardinal	Swamp Sparrow
Black-and-White Warbler	Eastern Kingbird	Northern Flicker	Tree Swallow
Black-billed Cuckoo	Eastern Meadowlark	Northern House Wren	Turkey Vulture
Black-capped Chickadee	Eastern Phoebe	Northern Rough-winged Swallow	Veery
Blue Jay	Eastern Towhee	Northern Waterthrush	White-breasted Nuthatch
Blue-gray Gnatcatcher	Eastern Wood-Pewee	Orchard Oriole	Willow Flycatcher
Blue-winged Teal	European Starling	Osprey	Wilson's Phalarope
Blue-winged Warbler	Field Sparrow	Ovenbird	Wood Duck
Bobolink	Gray Catbird	Pileated Woodpecker	Yellow Warbler
Brown Creeper	Great Blue Heron	Purple Martin	
	Great Crested Flycatcher	Red-breasted Nuthatch	
		Red-eyed Vireo	



Red-shouldered Hawks

Photo by Mike Wendt (climber)

Red-shouldered Hawk Nest Update

For over 20 years staff and birders alike have reported red-shouldered hawk sightings at Woodland Dunes. Red-shouldered hawks are a state-threatened species, known for their red shoulders, black and white banded tail, and red barred chest. In 2021, we discovered their nest within our preserve! Since then, we have been working with hawk expert John Jacobs to learn more about this wonderful species. The female red-shouldered hawk was fitted with a GPS tracking device, allowing us to see not only where she goes within the preserve, but also along her migration route. Every year John returns to the nest to collect data from and band the chicks that she hatched. This summer, when climber Mike Wendt went up to collect the chicks for John to band, three little faces peered back at him... three healthy fledglings!

By Kennedy Zittel, naturalist

Woodland Dunes Red-shouldered Hawk Nest Success	
Year	# of Chicks
2022	3
2023	1
2024	4
2025	3

UPCOMING EVENTS

Unless otherwise stated, registration is required for all programs.
To register, email Jess at jessicaj@woodlanddunes.org or call 920-793-4007.

FAMILY PROGRAMS

Raising a Wild Child

Thursday, September 11th: Camouflage
Thursday, October 9th: Fall Leaves
Thursday, November 13th: Turkeys
10:45am-Noon
Members: \$2/child
Non-members: \$3/child



Experience the wonders of nature with your 2-5 year old through nature hikes, play and guided activities. Help your child notice the natural world and ignite their curiosity! Children must be accompanied by an adult. Dress for the weather, majority of the program takes place outdoors. Registration required by the Monday before each session, space is limited. Sponsored by ATC.

Wild Families

10:00-11:00am
Members: \$3/child
Non-members: \$4/child
Wild Families is a program for families to explore various nature topics through hands-on activities, crafts, games, and hikes! This program is best for ages 6-12 years. Children must be accompanied by an adult. Some portions of this program will be led by staff while others will be for families to explore on their own. Dress for the weather - a majority of the program will take place outdoors. Registration is required by the Monday before each session, space is limited. Sponsored by ATC.



Saturday, September 6th: Migration

Migration isn't just for the birds! Learn why birds and other animals like butterflies and dragonflies migrate and the challenges they may face. We will explore the preserve to observe these creatures on their long journey.

Saturday, October 18th: Tracks & Scat

Calling all nature detectives! Come learn about tracks and scat identification through various hands-on activities and then test your knowledge as we discover what animals have been walking on our trails too.

Saturday, November 15th: Family Hike

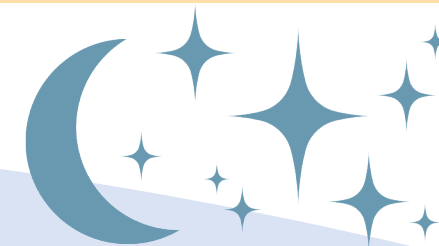
Let's go on a hike on Blazing Star Trail! Bring a backpack with an extra layer, water bottle and enjoy a family-friendly hike. We will sing, use binoculars and explore this beautiful part of the preserve. Wear tennis shoes/hiking shoes and be prepared for slightly uneven ground. Hike is 0.75 miles. Enchanted Forest

PROGRAMS FOR EVERYONE

Fall Star Parties

Saturday, September 20th 8:30-9:30pm
Saturday, October 18th 7:30-8:30pm
Saturday, November 15th 7:00-8:00pm

View night sky constellations with astronomers Al and Ben, along with the moon and other celestial objects through the big telescope in the Sky Shed. You can even bring your own telescope if you need help figuring out how to set it up. Weather and sky conditions permitting. Program takes place outside the Nature Center. Registration required by the Thursday before each session. Sponsored by The Winston Group and Next Era.



The Enchanted Forest

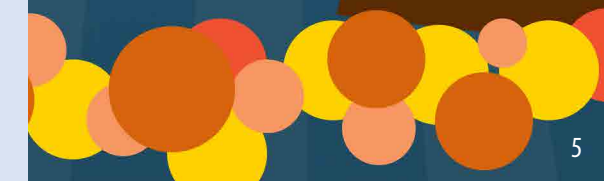
SATURDAY OCTOBER 4th 4:30-7:30 pm

Journey along a candlelit trail and meet some of Mother Nature's misunderstood (costumed) animals and learn why they are important in nature. This is an educational evening, not a scary one. Non-scary costumes and warm clothes are encouraged. Space is limited, groups sizes are kept small. Timeslots start at 4:30pm and are offered every 10 minutes.

Member: \$5 per person;
Non-member: \$7 per person
Children ages 3 and under- FREE
Reservations Required.

Call or email early to reserve a timeslot as this event sells out!

Registration opens on Monday Sept 15th.
Sponsored by the Lakeshore Unitarian Universalist Fellowship.



ADULT PROGRAMS

Adult Learning Series

All programs in this series have a sliding scale fee of \$3-\$10 per person. This will be collected at check-in, cash is preferred. Sponsored by The Winston Group and Next Era.

Northeast Wisconsin Pollinator Corridor



**Tuesday, September 9th
10:00-11:00am**

Come hear about the exciting collaboration happening in the greater Green Bay area to enhance pollinator habitats! Originally founded in 2011 by two residents of Green Bay, the Pollinator Corridor aims to create and map an island chain of habitat for bees, butterflies, and birds across the city and beyond. The project increases native pollinator numbers, improves water quality by using deep-rooted native plants that filter runoff, and supports urban food production by giving habitat to helpful pollinators. In partnership with the Green Bay Botanical Garden, the Conservation Corps installed over 20,000 native plants in 2024. Already this year, the Conservation Corps and Botanical Garden have installed another 15,000 native plants. Learn about the importance of this work, the future plans, and how you can get involved. Registration required by Friday, September 5th.

Mini Bioblitz



**Tuesday, October 7th
10:00-11:30am**

A bioblitz focuses on finding and identifying as many different species as possible in a designated area during a set amount of time. Animals, flowers, fungi, and more! Join staff for a mini bioblitz and learn about some of our favorite identifying apps and field guides... and help us count what plants/animals can be found on our preserve. Registration required by Monday, October 6th.

Eagle-eyed Citizen Science: Bald Eagle Nest Watch



**Friday, November 21st
11:00am**

Through the tremendous power of on-the-ground volunteers, the Bald Eagle Nest Watch (BENW) program has gathered important information about the health, productivity, and nesting success of around 250 Bald Eagle nests in Wisconsin since 2018. Join Brenna Marsicek, director of outreach for Southern Wisconsin Bird Alliance, to learn more about what BENW volunteers look for, why the work matters, and how to get involved in the Manitowoc area. Registration required by Wed., November 19th.

Write-ins at the Dunes

**Noon-1:15pm
Thursday, September 25th
Thursday, October 23rd
Thursday, November 20th
Sliding Scale of \$1-\$10/person
(cash preferred, collected at check-in)**

The Fresh Water Press is happy to continue to offer poetry write-ins at Woodland Dunes. This autumn we'll continue to enjoy nature poetry by reading and discussing the work of significant American poets, which may include Naomi Shihab Nye, Kimberly Blaeser, and James Wright, among others. Each session will differ slightly in focus, for example, we may examine poems about a single life form, such as trees or birds; consider Japanese forms; write a group poem; or explore themes of nature and society. Sessions will include time for writing, so bring your journal or a notebook and your favorite writing implement. Sharing your work is optional, but welcome. Sessions are meant for all levels of experience. Light snack and beverages will be available. Registration appreciated by the Tuesday before each session.

Dunes' Digest: A Lunch and Learn Series

Noon-1:00pm

All programs in this series have a sliding scale fee of \$3-\$10 per person. This will be collected at check-in, cash is preferred. Join other nature enthusiasts for an hour of nature knowledge. This series will run November-April and offer a different topic and presenter each month. Bring your own lunch and we will provide coffee, tea, water and a sweet treat. Registration is required by the Monday before each program.

Wednesday, November 19th: Weather for the Outdoor Enthusiast

Join Richard Mamrosh to learn about where to find and how to use weather information for your next hike, camping trip or fishing expedition. Detailed information about wind, clouds, temperature and severe weather potential will be discussed. You can ask whatever weather questions you like. Richard recently retired after a 37-year career in the National Weather Service. He has worked in Vermont, New York, Illinois, and for the last 27 years in Green Bay. Registration required by Monday, November 17th.

Guided Walks

Members: Free | Non-members: Sliding scale \$3-\$10/person

Join a staff member on a guided hike along one of our trails. Some hikes will have a specific topic while others will be about whatever nature presents to us that day. Registration is required the Monday before the hike takes place, as space is limited and meeting locations vary. Hikes will be under a mile long unless specified.

Amazing Monarchs

**Thursday, September 4th
- 10:00am**

Enjoy a stroll through the preserve and learn about the monarch butterflies as they migrate south for winter. Trail TBD.



Sunset Walk

**Thursday, November 6th
- 4:30pm**

Enjoy a short walk as the sun sets. Trail TBD.



Animal Riddles

Wednesday, November 26th - 9:00am

I sleep during the day and fly at night... but have no feathers to help my flight... who am I? Join staff on a guided hike while they share some fun animal riddles! Trail TBD.

Winter Walk

Friday, December 5th - 10:00am

Enjoy the winter scenery on a guided walk down one of our trails. Trail TBD.

Animal Hibernation

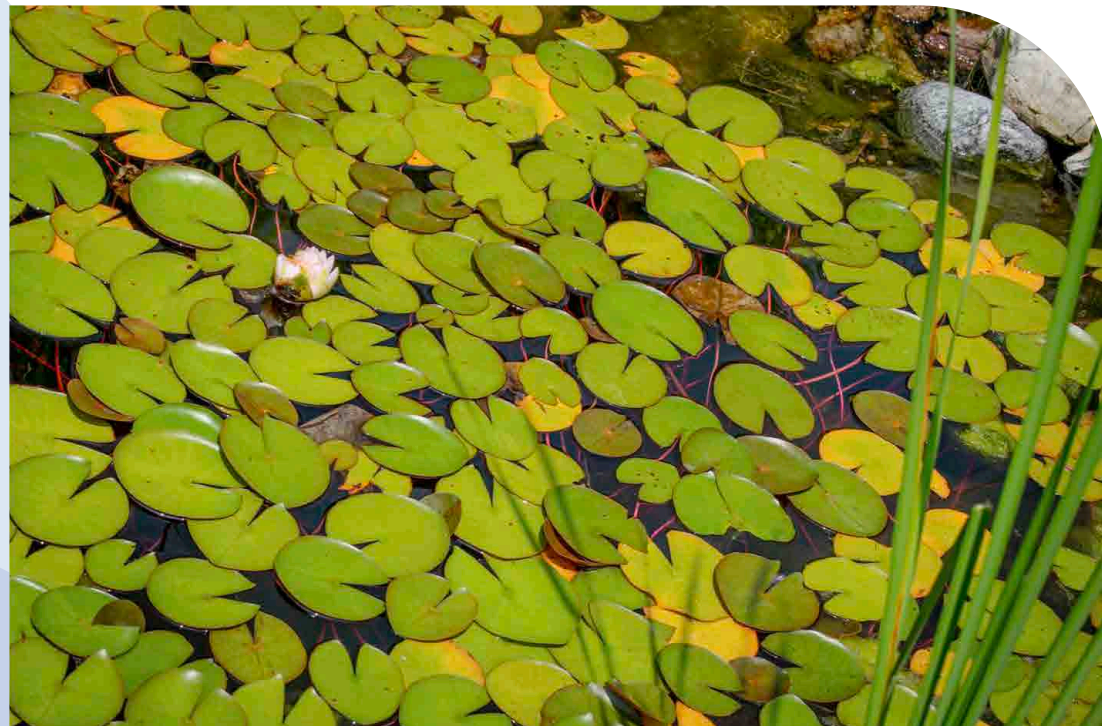
Wednesday, December 17th - 1:00pm

Learn about the different types of hibernation that help animals survive the chilliest of weather while walking along one of our trails. Trail TBD.

Batty for Bats

Tuesday, October 28th - 2:00pm

Join staff for a daytime hike along one of our trails as we talk about some of our nighttime visitors... bats! Trail TBD.



poetic community
brought together
as if verses of a sonnet

a favorite sound: water
moving over rocks

...feel the breeze on my face
...hear the birds, frogs, and trucks

...a lotus seen
no cushion on which to sit
to contemplate
its nameless nature

all moving
all being moved
by wind
by fear
by need
by want
by gravity
and circumstance

timekeepers moving
through infinity

Photo and Poem by
George Lottermoser



Photo by Kennedy Zittel

To register for any of our programs, please contact Jess at jessicaj@woodlanddunes.org or call at 920-793-4007.



Habitat, Education and WAICU interns from names L to R: Kallan Meyer, Maria Kraynek, Jordyn Ginestra, Sydnee Jerome, Natalie McNeely, Cielo Gutierrez Kuhaupt & not pictured Braeden Acosta, Antonio Pinto.

Braeden Acosta Woodland Dunes is a very exciting and eye-opening experience. Two Rivers is a big change of pace from my hometown of Rogers, Arkansas and this little town offers so much more than meets the eye. I immersed myself in the beauty of this area as a Habitat Restoration Intern, planting native trees and shrubs and removing invasive species. The people I met while working at Woodland Dunes gave me a great new perspective that I know I can take with me throughout my future career. After this summer I will be returning to the University of Missouri – Columbia to finish up my degree in Environmental Science with an emphasis in land and soil and I am excited to bring my freshly gained knowledge to my coursework in my senior year.

Jordyn Ginestra My summer here at Woodland Dunes is such a great transition out of college. My undergraduate work consisted largely of prairie restoration and wildlife conservation, so I feel very lucky to be able to continue learning in new and surprising ecosystems such as the upland forests and skunk cabbage covered wetlands. Spending so much of my time with trees this summer gave me the opportunity to learn more about each species and form new connections with them. I fell in love with the crack willow's method of self-regeneration and took moments of solace in the cedar's shade during an especially hot day in the field. I also made such fabulous friends with my fellow interns who make each day at Woodland Dunes new, exciting, and full of joy. My favorite memory so far this summer is getting to band Canada geese with them. Being here this summer is truly paving the way for my career in conservation while reminding me to slow down and appreciate where I am now.

Sydnee Jerome Working at Woodland Dunes as a habitat restoration intern has been an illuminating experience that affirmed my interest in wetland restoration work. Throughout my summer at Woodland Dunes, I was given the opportunity to dive deeper into invasive species management through removal and herbicide treatment, native species planting, and prairie flora and fauna identification. Prior to beginning this internship, I worried about identifying plants in a new state, but one of my most trusted professors at Finger Lakes Community College assured me that Wisconsin's ecological communities closely mirror that of my home region in the Finger Lakes. Despite similarities, it is an amazing opportunity to explore regional differences in plant communities, non-native species invasion, and ecosystems unique to the Midwest and Great Lakes Region. Back home, common buckthorn (*Rhamnus cathartica*) reigns supreme in invading New York's forests, but at Woodland Dunes I observed both common and glossy buckthorn (*Frangula alnus*) growing alongside the native alder-leaved buckthorn (*Rhamnus alnifolia*), a species I was completely unaware of before working at the Dunes. Exploring native prairie species such as St. John's wort (*Hypericum perforatum*), compass plant (*Silphium laciniatum*), and prairie phlox (*Phlox pilosa*) within and outside of work has also been an exciting experience this summer. Overall, this position solidified my interest in managing and restoring northeastern wetlands and forests and I look forward to applying my new knowledge as I dive deeper into land management, restoration, and wetland fieldwork back in New York.

Maria Kraynek This summer is flying by and I already learned so much! Whether it be out in the field, hiking the trails, or simply conversing with the other interns, boundless amounts of knowledge and experience came my way at Woodland Dunes. Living only seven minutes away, I grew up visiting the Nature Center and attending events like the Enchanted Forest, but it is really interesting to see and work behind the scenes of such a familiar organization. Being a habitat restoration intern, I worked many hours planting trees, removing invasives, and building a nine-acre deer enclosure, along with many other little jobs. These experiences have really solidified my love for the outdoors and reasoning for majoring in Environmental Science and Conservation. I cannot wait to take everything I learned back to UW-Milwaukee this fall! Not only have I gained knowledge and experience, but this internship introduced me to some amazing people. All of the other interns made this such a memorable and fun summer and as the "youngster" of the group, they gave me some great advice going into my sophomore year of college. I cannot wait to see what they will all do in the future and I am so thankful for everything this internship gave me.

Antonio Pinto This summer at Woodland Dunes has been a refreshing experience, with lots of beautiful views, joyous moments in the field, and wonderful people to call my friends! At first, I was a little nervous coming into Woodland Dunes, but with a very welcoming orientation and everybody here being so friendly, I felt welcomed immediately. It is nice that I am not so far from home, being from Roselle, Illinois, a suburb of Chicago. I currently attend Purdue University in West Lafayette, Indiana, where I am an incoming senior studying Ecology, Evolution and Environmental Biology. I would like to pursue conservation-based work, although I am not very sure what type of conservation work, this internship truly gave me an understanding of vegetative-based work. I had a great time walking along various trails identifying the flora and birds of the region, banding wild geese (which were crazy!), and constructing the nine-acre deer enclosure. Overall, I will not forget my time here at Woodland Dunes, and will look back at it, and the people with whom I worked fondly.

WAICU INTERN

(Wisconsin Association of Independent Colleges and Universities)

Cielo Gutierrez Kuhaupt Woodland Dunes opened my eyes in such different ways this summer! I am blessed with the opportunity to intern here through WAICU, allowing me to experience every department of work at this place. This entails assisting with education programs, planting native trees, and the marketing / social media. While I enjoyed aspects of every task, bird surveys embody the reason I love nature. Simply sitting in silence and observing the abiding beauty. I am entering my last semester of undergraduate at Ripon College where I will be serving as captain of the women's soccer team and would like to pursue a graduate degree this upcoming spring. Although I am uncertain what my future may hold, my time at the Dunes helped guide my path!

EDUCATION INTERN & VOLUNTEER

Natalie McNeely My experience as the education intern this summer is both fulfilling and fun! I am glad that I decided to return as an intern for a second summer. I am grateful for the opportunity to work alongside Jess and Kennedy, as well as the other interns, staff, and volunteers. My primary role this summer is assisting with various summer education programs and summer camps, which I am thoroughly enjoying. I have also been pleased to participate in multiple nature surveys and educational experiences offered throughout the summer. Specifically, the other interns and I are part of bumble bee surveys, and I enjoyed helping lead this task. I have been excited this summer to see the prairie plants bloom and pollinator activity increase, as it reminds me of the research I conducted while attending school at Ripon College. I recently graduated from Ripon College in May with majors in Biology and Environmental Studies, and I am originally from Neenah, Wisconsin. Although I did not travel far from home, I enjoyed learning about and experiencing the unique ridge and swale habitats that Woodland Dunes have to offer. Continuing my journey, I plan to apply the knowledge and experience I gained this summer to further my passion for environmental education and conservation.

Kallan Meyer Volunteering at Woodland Dunes this summer allotted me new knowledge, friendships, and so much fun. The Dunes is helping me achieve my practicum hours as I strive for my education in Psychology and Outdoor Education from the University of Wisconsin – River Falls. Through this opportunity, I deepened my understanding of the unique wetland ecosystems that shape my hometown of Two Rivers. From identifying bird calls, plants, and invertebrates to expanding my ecological awareness each day, I continue to learn and grow. Equally rewarding is the chance to observe the ways people interact with one another and with the natural world. Woodland Dunes serves a diverse community, hosting children's and adult day camps, engaging volunteers, and welcoming visiting families. I see firsthand the positive impact that nature can have on individuals of all ages. As I move into my final year of undergrad, I am confident I am working toward a career and life that align with my passions and values.



Freshwater Scholars from L to R: Kyler Dillenberg & Rachel Hock.

FRESHWATER SCHOLARS

Kyler Dillenberg Being a Freshwater Scholar this summer at Woodland Dunes is so much fun! My passion for the outdoors continues to flourish and I am learning so much about the environment and the many species that call it home. As a high school Summer Scholar, I assist with several different tasks throughout the preserve. These included planting trees, building a deer enclosure, helping with summer camps and programs, as well as bumble bee and bird surveys. I gained connections with a welcoming and passionate group of people that made this experience endlessly more enjoyable. This summer has truly been a transformative experience and I am hopeful that my experience at the Dunes will be beneficial, as I would like to pursue an Environmental Science degree after high school.

Rachel Hock Through the Freshwater Collaborative and UWGB Scholars program, I am fortunate enough to be placed at Woodland Dunes! My time here is amazing, this is a very welcoming place to learn and grow knowledge in nature. I am aiding and leading stations for education camps or groups that come, helping the land habitat interns with planting trees, learning about threatened plants, and building a deer enclosure. Something new I learned was about the Wisconsin Bumble Bee Brigade through doing surveys to track and record them, a favorite of mine since I love photography. Overall, learning so many new species and threatened or endangered species has been very fascinating and enjoyable. I am from West De Pere, graduated from West De Pere High School. I am going to Northeast Wisconsin Technical College for Environmental Science and cannot wait for more opportunities like this in the future.

Thank You!

Donations are recognized on a quarterly basis. If you don't see your donation on here, it missed the cutoff and will be in the next issue.

Memoriams/Honoriams

In Memory of James Bruechert
Jeffrey & Mary Gehler

In Memory of Marilyn Christel
Helen Bleser
Michael & Karen McFadzen

In Memory of Norbert Pritzel
Tom & Betsy Kocourek
John & Julie Woodcock

In honor of Robert Gahl
Tom & Betsy Kocourek

In honor of Annette Henry
Gerald & Patricia Henry

In honor of Robert & Carolyn Kleckner
Greg & Judy Goodchild

Property Purchase Donations

Barry & S&y Bast
Helen Bleser
Shane & Donna Buechner
Scottie Dayton
Joseph & Eleanor Di Raimondo
John & Kristin Epstein
Betty Fink
Jerome & Gail Fox
Julie Grinde
Rae Gutschow
Robert & Judith Higgins
Daniel Hornung & Anne Schuette
James Johnson
Catherine Kluber
Lee & Eileen Kummer
James & Barbara Lester
Timothy Maatman & Phyllis Schippers
Lou Ann Norsetter
Thomas & Susan O'Connor
Ray & Kay Pollen
Tim & Ann Salutz
Paul & Bonnie Simons
Dennis & Mary Swetlik
Joseph & Rhonda Trader
Robert & Peggy Turnbull
Richard & Kathleen Van Dorn
Scott & Vicki Wichlacz

Endowment Donations

Dolly McNulty

General Donations

Advocate Aurora
Lisa Bunke
Mark Bunke
Country Visions Coop
Manitowoc Lions Club
Rita Marquardt
Master Gardeners of Manitowoc County
North Lakel& Discovery Center
Point Creek Home
SEMPRA employer & employees

Grants

Wisconsin Public Service Foundation

Inkind Donations

Festival Foods

Summer Appeal

Pam Bean
Grace Boeder
Robert & Deborah Bonk
Donald & Kristine Cisler
Carol Gibson
Michael & Patricia Gottfredsen
Lou Ann Gray
Jeff & Ruth Harding
Todd & &rea Hoschbach
Barbara Katz
Charlotte Larsen
Paul & Joan Schmid
Gail Terry
Michael & Debra Timm
John & Gina Welch

Trail & Other Donations

Michael & Jenene Garey
Debbie Hanson & Terry Farber

Reminder this list covers received donations from the previous quarter April through June 2025

VOLUNTEER SPOTLIGHT



Photo by Max Kornetzke

Doris Magyar

How long have you volunteered at Woodland Dunes and what made you become involved?

I began volunteering in the butterfly garden in 2006 through 2017. I took a leave of absence and rejoined in 2022. This experience gave me more knowledge on what plants are favored by butterflies.

What do you most enjoy about being involved with Woodland Dunes?

Meeting other great volunteers who share their knowledge with you. Also realizing all the good work being done by these folks in the control of invasives, that is so important.

What are some of your favorite pastimes or hobbies?

Doing my gardening each season and learning how the seasons vary from year to year.

Words of wisdom for other volunteers?

There are many learning sessions for all ages. Most importantly are the offerings to the school groups to experience nature. These will become our future volunteers.



Photo by Kennedy Zittel

NEW MEMBERSHIP LEVELS FOR 2026

Become a Dunes Defender Member!

We are pleased to announce that our membership levels will be updated beginning in 2026, with these changes taking effect on October 1, 2025. With your renewed or continued participation, you will become a DUNES DEFENDER MEMBER. This status reflects your commitment to nature education at all ages, your support of our stewardship efforts to sustain the preserve's ecological health, and your appreciation for experiencing nature through the arts, literature, music, or science. We appreciate your investment in the Woodland Dunes community!

DUNES DEFENDER MEMBER BENEFITS

- All membership levels now include household benefits.
- Receive the printed quarterly "Dunesletter" by mail.
- Stay informed with monthly electronic email updates and timely announcements regarding programs.
- Receive a 10% discount on all purchases at the Dunes Nature Gift Shop.
- Enjoy member discounts on admissions to Woodland Dunes programs and events- including our popular summer camps and twice-a-month guided hikes!!
- At the Tanger through Bald Eagle levels, you may select one gift shop item: a ball cap, T-shirt, or mug.
- Membership supports a private non-profit organization focused on nature education and experiences, as well as habitat conservation efforts.

2026 MEMBERSHIP

Name _____

Address _____

City _____

State _____ Zip _____

Phone _____

Email _____

Monthly Donor Installments

– this option helps us the most throughout the entire year!

ELECTRONIC FUNDS TRANSFER

Transfer \$_____ from my account each month
Please make my withdrawal on the 1st or 15th of the month.
Electronic Funds Transfer Authorization:

I wish to start/change Electronic Funds Transfers. **I have enclosed a voided check (required).** I understand the amount indicated will be withdrawn automatically from my account each month until I notify Woodland Dunes Nature Center to stop.

OR

MONTHLY PAYMENT BY CREDIT CARD

Amount _____

Please charge my credit card the above amount monthly.

Credit Card #: _____

Exp: _____ CVV#: _____

Signature _____

Date _____

I would like to contribute to the endowment fund. Please contact me.

LEVELS	ANNUAL AMOUNT	MONTHLY AMOUNT
<input type="checkbox"/> Bobolink	\$50.00	\$4.17
<input type="checkbox"/> Cardinal	\$120.00	\$10.00
<input type="checkbox"/> Whippoorwill	\$240.00	\$20.00
<input type="checkbox"/> Tanager	\$480.00	\$40.00
<input type="checkbox"/> Golden Plover	\$1200.00	\$100.00
<input type="checkbox"/> Sandhill Crane	\$2400.00	\$200.00
<input type="checkbox"/> Saw-whet Owl	\$4800.00	\$400.00
<input type="checkbox"/> Bald Eagle	\$6000.00	\$500.00

Please check or circle the membership level you wish to support.

If a membership is paid after October 1, it covers the end of the year plus the next year.
Please send this form and your tax-deductable membership to Woodland Dunes, PO Box 486, Two Rivers, WI 54241-0486.



WOODLAND DUNES
NATURE CENTER & PRESERVE

PO Box 486 | Two Rivers, WI 54241-0486

Conservation
Environmental Education
Outdoor Recreation

MARK YOUR CALENDAR!

**MEMBERS ONLY
APPRECIATION
MEETING
Saturday, November 8**



1:00 to 3:00 pm

*Woodland Dunes
Nature Center,
West Foundation Room.*

*Be watching for details and
mark it on your calendar
now! Invitations will be
sent in early October.*



PRESENTS

heiknbrew

**3rd Annual heiknbrew!
Friday, September 5**

*Woodland Dunes Nature Center. Outdoor
event with craft brew and wine tastings on
our trails in the early evening. Live music,
too! More details to follow soon!*

